

Genesee Region EDUCATION PROGRAMS Summer 2024 Calendar



**Red
Admiral**



**Tiger
Swallowtail**

All programs led by park staff and volunteers: (cb) Conrad Baker, (tb) Theo Berenson, (ob) Oliver Bickel, (cd) Claire Devlin, (lh) Lara Hargrave, (sh) Sarah Hodgins, (jh) Jules Hoepting, (ml) Mike Landowski, (hm) Heather Markel, (mn) Matt Nusstein, (ao) Anne O'Reilly, (kr) Karen Russell, (js) Jen Snow, (kt) Kate Torrey

PROGRAMS at DARIEN LAKES STATE PARK

See in-park flyers for additional camper recreation programs. Call 585-547-9242 for more information on programs.

JULY

- 3, 10, 17, 24, 31
- Wed 10:00am **Wednesday Nature Hike.** Meet at Sumner Rd parking area. (2 hours, 1 mile) (sh)
- 5, 12, 19, 26
- Fri 10:00am **Forest Buddies Nature Program.** Meet at recreation building by south side of Harlow Lake near the new kayak launch. Ages 3-6. (2 hours, onsite with short walk) (sh)

AUGUST

- 7, 14, 21, 28
- Wed 10:00am **Wednesday Nature Hike.** Meet at Sumner Rd parking area. (2 hours, 1 mile) (sh)
- 2, 9, 16, 23, 30
- Fri 10:00am **Forest Buddies Nature Program.** Meet at recreation building by south side of Harlow Lake near the new kayak launch. Ages 3-6. (2 hours, onsite with short walk) (sh)
- 31 Sat • 1:00pm **CENTENNIAL: Labor Day Celebration.** Events taking place throughout the park, music and fireworks. Call 585-547-9242 for more information (events concluding at 9:00pm)

SEPTEMBER

- 4, 11, 18, 25
- Wed 10:00am **Wednesday Nature Hike.** Meet at Sumner Rd parking area. (2 hours, 1 mile) (sh)
- 6, 13, 20, 27
- Fri 10:00am **Forest Buddies Nature Program.** Meet at recreation building by south side of Harlow Lake near the new kayak launch. Ages 3-6. (2 hours, onsite with short walk) (sh)

The following RELATIVE RATING SYSTEM is applied to the programs. Most are appropriate for families. All programs are ● I except as noted.

Terrain

- easy (shortest time, near level, on trail)
- more difficult (intermediate)
- ◆ most difficult (longest time, steeper banks, or off trail)

Presentation of subject matter (geared to audience)

- I introductory level
- II secondary level

PROGRAMS at GENESEE VALLEY GREENWAY STATE PARK

Call 585-493-3680 for more information on programs.

JULY

- 27 Sat • 10:00am **ROC to Lock Group Hike.** Meet at Brook Road, Rochester (42.217149, -78.282242). (1 hour, 2 miles) (cb)

AUGUST

- 17 Sat • 10:00am **Key to the Oakland Locks.** Meet at Oakland locks, Nunda (42.577908, -77.971231). (1 hours, 1 mile) (cb)
- 24 Sat • 10:00am **CANAL HISTORY: Hinsdale.** Meet on Old Rd. 16 past Old State Rd. (42.169682, -78.384719) (2 hours, 2 miles) (ml)

SEPTEMBER

- 7 Sat • 10:00am **CANAL HISTORY: Caneadea to Oramel.** Meet at the Genesee Wilds access parking area on Rte. 19. (42.381723, -78.154974)(2 hours, 1½ miles) (ml)
- 22 Sun • 10:00am **Cuba Garlic Festival Walk.** Meet just down the road from festival grounds at Bull Street parking lot, 5 Bull Street, Cuba, NY. (1½ hours, 1 mile) (cb)

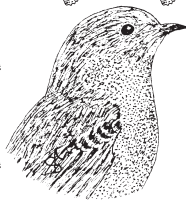
PROGRAMS at HAMLIN BEACH STATE PARK

See in-park flyers for additional camper recreation programs. Call 585-964-2462 for more information on programs.

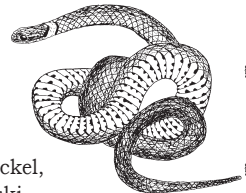
JULY

- 6 Sat • 10:00am **Tour of CCC and WWII POW Camp.** Meet at the camp entrance on Moscow Rd. (1 hour, onsite) (kt)

Genesee Region EDUCATION PROGRAMS Summer 2024 Calendar



**Eastern
Bluebird**
JULY



**Ringneck
Snake**

All programs led by park staff and volunteers: (cb) Conrad Baker, (tb) Theo Berenson, (ob) Oliver Bickel, (cd) Claire Devlin, (lh) Lara Hargrave, (sh) Sarah Hodgins, (jh) Jules Hoepting, (ml) Mike Landowski, (hm) Heather Markel, (mn) Matt Nusstein, (ao) Anne O'Reilly, (kr) Karen Russell, (js) Jen Snow, (kt) Kate Torrey

- 18 Thu • 11:00am **Books at the Beach.**
Co-sponsored by the Hamlin Public Library. Please pre-register for the program by calling the Hamlin Public Library (585) 964-2320. Meet picnic shelter 3 in area 3. (3 hours, 1 mile/onsite) (lh)
- 21 Sun • 8:00pm **Marsh by Moonlight.**
Meet at Yanty Marsh parking area. (1 hour, 1 mile) (lh)

- 27 Sat • 10:00am **Postcard to a Tree.** Meet picnic shelter 3 in area 3. (2 hours, onsite) (cd)

AUGUST

- 3 Sat • 1:00pm **LEARNING MOHAWK: A Language Lesson.** Meet at picnic shelter 3 in area 3. (1 hour, onsite) Eli Carr
- 10 Sat • 10:00am **Wetland Wander with Hamlin Hiking Club.** Please pre-register at <https://hamlinny.myrec.com/info/activities/default.aspx?type=activities>. Meet at Yanty Marsh parking area. (1 hour, 1 mile) (lh)
- 12:00pm **Hiking Safety 101.** Meet at camper recreation building in the campground. (1 hour, onsite) (lh)
- 9:00pm **Perseid Meteor Shower Viewing.** Bring a lawn chair or blanket. Meet at picnic shelter 3 in area 3. (1 hour, onsite) (kt)

- 16 Fri • 10:00am **BEARS AT THE BEACH: Teddy Bear Picnic.** Sponsored by the Friends of Hamlin Beach State Park, geared towards cubs 8 and under but all are welcome. Please pre-register by emailing Genesee.education@parks.ny.gov. Meet at picnic shelter 3 in area 3. (1½ hours, ¼ mile) (lh)

- 31 Sat • 10:00am **Beachside Yoga.** Meet picnic shelter 3 in area 3. (1 hour, onsite) yoga alliance certified RYT200 instructor, Marion
- 8:00pm **North Star in the Sky and in History.** Meet picnic shelter 3 in area 3. (1 hour, onsite) (lh)

SEPTEMBER

- 1 Sun • 10:00am **Beachside Yoga.** Meet picnic shelter 3 in area 3. (1 hour, onsite) Yoga Alliance certified RYT200 instructor, Marion.

The following RELATIVE RATING SYSTEM is applied to the programs. Most are appropriate for families. All programs are ● I except as noted.

Terrain

- easy (shortest time, near level, on trail)
- more difficult (intermediate)
- ◆ most difficult (longest time, steeper banks, or off trail)

Presentation of subject matter (geared to audience)

- I introductory level
- II secondary level

- 21 Sat • 11:00am **Prehistoric Plants.** Meet parking lot 1. (1½ hours, onsite) (lh)

**PROGRAMS at
LAKESIDE STATE PARK**
See in-park flyers for additional camper recreation programs. Call 585-283-6673 for more information on programs.

JULY

- 13 Sat • 6:30pm **Hamlin Hiking Club.** Register online with the Town of Hamlin Recreation Department; hamlinny.myrec.com. Meet at picnic pavilion in day-use area. (1 hour, 2 miles) (hm)

AUGUST

- 17 Sat • 2:00pm **CENTENNIAL: Block Party at the Lake.** Events taking place throughout the park. Call 585-682-4888 for more information (events concluding at 10:00pm)
- 25 Sun • 10:00am **Mysterious Mammals Meander.** Meet at picnic pavilion in day-use area. (2 hours, 2 miles) (lh)

**PROGRAMS at
LETCHWORTH STATE PARK**
Call 585-493-3680 for more information on programs.

JULY

- 1-31 • **NATURE TABLE – Discovering Dragonflies.** (10:00am - 5:00pm)
- 1 Mon • 12:00pm **The Letchworth Story.** Meet at the Glen Iris Inn. (1 hour, 1 mile) (cb)
- 2:00pm **Mr. Letchworth: Champion of the Less Fortunate.** Meet at the museum. (½ hour +, onsite) (ob)

Letchworth State Park EDUCATION PROGRAMS Summer 2024 Calendar



Horn Coral



Great Horned Owl

All programs led by park staff and volunteers: (cb) Conrad Baker, (tb) Theo Berenson, (ob) Oliver Bickel, (cd) Claire Devlin, (lh) Lara Hargrave, (sh) Sarah Hodgins, (jh) Jules Hoepting, (ml) Mike Landowski, (hm) Heather Markel, (mn) Matt Nusstein, (ao) Anne O'Reilly, (kr) Karen Russell, (js) Jen Snow, (kt) Kate Torrey

The Humphrey Nature Center (HNC) Open Daily 10:00 am - 5:00 pm

JULY

- 2 Tue • 1:30pm **Marvin the Mastodon.** Meet at the museum. (½ hour+, onsite) (js)
- 2:00pm **Day-to-Day Life with the Seneca.** Meet at the museum. (½ hour +, onsite) (kr)
- 3 Wed • 10:00am **I BIRD NY Challenge.** Meet at **HNC**. (1½ hours, 1 mile) (mn)
- 2:00pm **The Civilian Conservation Corps: The Boys Who Built the Park.** Meet at the museum. (½ hour +, onsite) (jh)
- 4 Thu • 2:00pm **The Remarkable Life of Mary Jemison.** Meet at the museum. (½ hour +, onsite) (ob)
- 5 Fri • 10:00am **EXPLORE LETCHWORTH: Big Flats.** Meet at campground registration building. (2 hours, 2 miles) (mn)
- 11:00am **The Story of the Glen Iris Estate.** Meet at the museum. (1 hour, onsite) (js)
- 2:00pm **The Genesee Valley Canal: Clinging to the Canyon.** Meet at the museum. (½ hour +, onsite) (jh)
- 6 Sat • 10:00am **ARBORETUM WALK: Nursery Blocks 1, 4, 11 & 32.** Meet at Trout Pond. (2 hours, 1½ miles) (ml)
- 1:00pm **Tour of Upper and Middle Falls.** Meet at Upper Falls Picnic Area. (1 hour, 1 mile) (cb)
- 7 Sun • 10:00am **Fishing for Beginners.** Meet at Trout Pond. (2 hours, onsite) (tb)
- 8 Mon • 2:00pm **Mr. Letchworth: Champion of the Less Fortunate.** Meet at the museum. (½hour +, onsite) (ob)
- 9 Tue • 1:30pm **Marvin the Mastodon.** Meet at the museum. (½ hour +, onsite) (js)
- 2:00pm **Day-to-Day Life with the Seneca.** Meet at the museum. (½ hour +, onsite) (kr)
- 10 Wed • 10:00am **I BIRD NY Challenge.** Meet at Trout Pond. (1½ hours, 1 mile) (tb)
- 2:00pm **The Civilian Conservation Corps: The Boys Who Built the Park.** Meet at the museum. (½ hour +, onsite) (jh)
- 11 Thu • 10:00am **Summer Wildflowers.** Meet at the

The following RELATIVE RATING SYSTEM is applied to the programs. Most are appropriate for families.

All programs are ● I except as noted.

Terrain

● easy (shortest time, near level, on trail)

■ more difficult (intermediate)

◆ most difficult (longest time, steeper banks, or off trail)

Presentation of subject matter (geared to audience)

I introductory level

II secondary level

Mt. Morris Dam visitor center parking area on the east side of the park.

(2 hours, 1 mile) (mn)

• 2:00pm **The Remarkable Life of Mary Jemison.** Meet at the museum. (½ hour +, onsite) (ob)

12 Fri • 11:00am **The Story of the Glen Iris Estate.** Meet at the museum. (1 hour, onsite) (js)

• 2:00pm **The Genesee Valley Canal: Clinging to the Canyon.** Meet at the museum. (½ hour +, onsite) (jh)

13 Sat • All Day: **Today is the North American Butterfly Association's Count Day.** Experienced butterfly watchers wishing to participate on an informal count at Letchworth State Park may contact Matt Nusstein at Genesee.Education@parks.ny.gov. (Count rain date is July 14) (mn)

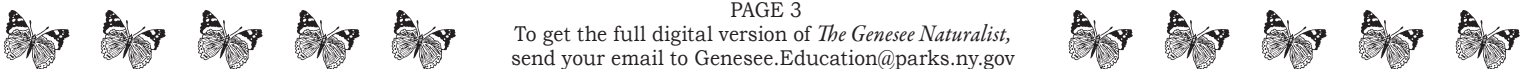
• 12:00pm **Butterfly Beauties.** Meet at Highbanks Recreation Area playground, just past the Mount Morris entrance, 2640 Park Road, Mount Morris, NY. (½ hour, onsite) (cb)

• 1:00pm **Tour of Lower Falls.** Meet at Lower Falls Area, Octagon Building. (1 hour, 1 mile) (tb)

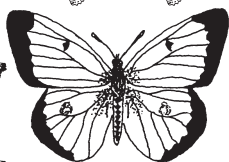
14 Sun • 1:00pm **Nature Scavenger Hunt.** Meet at the **HNC**. (1 hour, ½ mile) (tb)

15 Mon • 2:00pm **Mr. Letchworth: Champion of the Less Fortunate.** Meet at the museum. (½ hour +, onsite) (ob)

16 Tue • 1:30pm **Marvin the Mastodon.** Meet at the museum. (½ hour +, onsite) (kr)



Letchworth State Park EDUCATION PROGRAMS Summer 2024 Calendar



Common Sulfur



15-spotted Ladybird Beetle

All programs led by park staff and volunteers: (cb) Conrad Baker, (tb) Theo Berenson, (ob) Oliver Bickel, (cd) Claire Devlin, (lh) Lara Hargrave, (sh) Sarah Hodgins, (jh) Jules Hoepfing, (ml) Mike Landowski, (hm) Heather Markel, (mn) Matt Nusstein, (ao) Anne O'Reilly, (kr) Karen Russell, (js) Jen Snow, (kt) Kate Torrey

The Humphrey Nature Center (HNC) Open Daily 10:00 am - 5:00 pm

JULY

- 16 Tue • 2:00pm **Day-to-Day Life with the Seneca.** Meet at the museum. (½ hour +, onsite) (kr)
- 17 Wed • 2:00pm **The Civilian Conservation Corps: The Boys Who Built the Park.** Meet at the museum. (½ hour +, onsite) (jh)
- 18 Thu • 1:00pm **Raptor Watch.** Information table and optics. Meet at Archery Field overlook. (1 hour, onsite) (mn)
- 2:00pm **The Remarkable Life of Mary Jemison.** Meet at the museum. (½ hour +, onsite) (ob)
- 19 Fri • 11:00am **The Story of the Glen Iris Estate.** Meet at the museum. (1 hour, onsite) (js)
- 2:00pm **The Genesee Valley Canal: Clinging to the Canyon.** Meet at the museum. (½ hour +, onsite) (jh)
- 20 Sat • 8:00am **CENTENNIAL: NYS Parks Legacy Celebration.** Events taking place throughout the park. Call 585-493-3600 for more information (events concluding at 10:00pm)
- 21 Sun • 1:00pm **Tour of Upper and Middle Falls.** Meet at Upper Falls Picnic Area. (1 hour, 1 mile) (ml)
- 22 Mon • 2:00pm **Mr. Letchworth: Champion of the Less Fortunate.** Meet at the museum. (½ hour +, onsite) (ob)
- 23 Tue • 1:30pm **Marvin the Mastodon.** Meet at the museum. (½ hour +, onsite) (js)
- 2:00pm **Day-to-Day Life with the Seneca.** Meet at the museum. (½ hour +, onsite) (kr)
- 24 Wed • 10:00am **I BIRD NY Challenge.** Meet at Hogsback Overlook. (1½ hours, 1 mile) (tb)
- 2:00pm **The Civilian Conservation Corps: The Boys Who Built the Park.** Meet at the museum. (½ hour +, onsite) (jh)
- 25 Thu • 2:00pm **The Remarkable Life of Mary Jemison.** Meet at the museum. (½ hour +, onsite) (ob)
- 26 Fri • 11:00am **The Story of the Glen Iris Estate.** Meet at the museum. (1 hour, onsite) (js)

The following RELATIVE RATING SYSTEM is applied to the programs. Most are appropriate for families. All programs are ● I except as noted.

Terrain

- easy (shortest time, near level, on trail)
- more difficult (intermediate)
- ◆ most difficult (longest time, steeper banks, or off trail)

Presentation of subject matter (geared to audience)

- I introductory level
- II secondary level

- 1:00pm **Chemistry of Nature.** Meet at **HNC**. (1½ hours, 1 mile) (tb)
- 2:00pm **The Genesee Valley Canal: Clinging to the Canyon.** Meet at the museum. (½ hour +, onsite) (jh)
- 27 Sat • 1:00pm **SUMMER SYMPOSIUM SERIES: The Small, The Mighty and the Wet. Theo Berenson.** Meet at the **HNC**. (1 hour, onsite)
- 28 Sun • 10:00am **Crayfish Crawl.** Meet at Lower Falls Restaurant. (2 hours, 1 mile or more) (tb)
- 1:00pm **Tour of Lower Falls.** Meet at Lower Falls Area, Octagon Building. (1 hour, 1 mile) (ml)
- 29 Mon • 2:00pm **Mr. Letchworth: Champion of the Less Fortunate.** Meet at the museum. (½ hour +, onsite) (ob)
- 30 Tue • 1:30pm **Marvin the Mastodon.** Meet at the museum. (½ hour +, onsite) (js)
- 2:00pm **Day-to-Day Life with the Seneca.** Meet at the museum. (½ hour+, onsite) (kr)
- 31 Wed • 2:00pm **The Civilian Conservation Corps: The Boys Who Built the Park.** Meet at the museum. (½ hour +, onsite) (jh)

AUGUST

- 1-31 • **NATURE TABLE – Monarchs.** **HNC** (10:00am - 5:00pm)
- 1 Thu • 1:00pm **Nature Scavenger Hunt.** Meet at the **HNC**. (1 hour, ½ mile) (tb)
- 2:00pm **The Remarkable Life of Mary Jemison.** Meet at the museum. (½ hour +, onsite) (ob)

Letchworth State Park EDUCATION PROGRAMS Summer 2024 Calendar



False Morel



Big Brown Bat

All programs led by park staff and volunteers: (cb) Conrad Baker, (tb) Theo Berenson, (ob) Oliver Bickel, (cd) Claire Devlin, (lh) Lara Hargrave, (sh) Sarah Hodgins, (jh) Jules Hoepting, (ml) Mike Landowski, (hm) Heather Markel, (mn) Matt Nusstein, (ao) Anne O'Reilly, (kr) Karen Russell, (js) Jen Snow, (kt) Kate Torrey

The Humphrey Nature Center (HNC) Open Daily 10:00 am - 5:00 pm

AUGUST

- 2 Fri • 11:00am **The Story of the Glen Iris Estate.** Meet at the museum. (1 hour, onsite) (js)
- 2:00pm **The Genesee Valley Canal: Clinging to the Canyon.** Meet at the museum. (½ hour +, onsite) (jh)
- 3 Sat • 10:00am **EXPLORE LETCHWORTH: Wolf Creek.** Meet at wolf creek parking area. (2 hours, 2 miles) (tb)
- 1:00pm **SUMMER SYMPOSIUM SERIES: Folklore and Myths of Letchworth State Park. Conrad Baker.** Meet at the **HNC**. (1 hour, onsite)
- 4 Sun • 10:00am **Furs and Skulls.** Displays and presentation at Archery Field overlook. (2 hours, onsite) (tb)
- 1:00pm **Tour of Upper and Middle Falls.** Meet at Upper Falls Picnic Area. (1 hour, 1 mile) (mn)
- 5 Mon • 2:00pm **Mr. Letchworth: Champion of the Less Fortunate.** Meet at the museum. (½ hour +, onsite) (ob)
- 6 Tue • 1:30pm **Marvin the Mastodon.** Meet at the museum. (½ hour +, onsite) (js)
- 2:00pm **Day-to-Day Life with the Seneca.** Meet at the museum. (½ hour +, onsite) (kr)
- 7 Wed • 10:00am **I BIRD NY Challenge.** Meet at Mt. Morris Dam. (1½ hours, 1 mile) (tb)
- 2:00pm **The Civilian Conservation Corps: The Boys Who Built the Park.** Meet at the museum. (½ hour +, onsite) (jh)
- 8 Thu • 1:00pm **Raptor Watch.** Information table and optics. Meet at Great Bend overlook. (1 hour, onsite) (mn)
- 2:00pm **The Remarkable Life of Mary Jemison.** Meet at the museum. (½ hour +, onsite) (ob)
- 8:00pm **CREPUSCULAR WALK: Night Sounds.** Meet at **HNC**. (2 hours, 1 mile) (mn)
- 9 Fri • 11:00am **The Story of the Glen Iris Estate.** Meet at the museum.

The following RELATIVE RATING SYSTEM is applied to the programs. Most are appropriate for families. All programs are ● I except as noted.

Terrain

- easy (shortest time, near level, on trail)
- more difficult (intermediate)
- ◆ most difficult (longest time, steeper banks, or off trail)

Presentation of subject matter (geared to audience)

- I introductory level
- II secondary level

- (1 hour, onsite) (js)
- 2:00pm **The Genesee Valley Canal: Clinging to the Canyon.** Meet at the museum. (½ hour +, onsite) (jh)
- 10 Sat • 10:00am **ARBORETUM WALK: Railroad Blocks.** Meet at council grounds parking area. (2 hours, 2 miles) (ml)
- 1:00pm **SUMMER SYMPOSIUM SERIES: Learn about the creation of The Letchworth State Park Atlas. Steve Tulowiecki.** Meet at the **HNC**. (1 hour, onsite)
- 3:00pm **Folklore of Letchworth State Park.** Meet at Middle Falls. (1 hour, 1 mile) (cb)
- 11 Sun • 1:00pm **Tour of Lower Falls.** Meet at Lower Falls Area, Octagon Building. (1 hour, 1 mile) (tb)
- 12 Mon • 2:00pm **Mr. Letchworth: Champion of the Less Fortunate.** Meet at the museum. (½ hour +, onsite) (ob)
- 13 Tue • 1:30pm **Marvin the Mastodon.** Meet at the museum. (½ hour +, onsite) (js)
- 2:00pm **Day-to-Day Life with the Seneca.** Meet at the museum. (½ hour +, onsite) (kr)
- 14 Wed • 2:00pm **The Civilian Conservation Corps: The Boys Who Built the Park.** Meet at the museum. (½ hour +, onsite) (jh)
- 15 Thu • 1:00pm **Caterpillar Hunt.** Meet at the **HNC**. (1 hour, ½ mile) (tb)
- 2:00pm **The Remarkable Life of Mary Jemison.** Meet at the museum. (½ hour +, onsite) (ob)

AUGUST

Letchworth State Park EDUCATION PROGRAMS Summer 2024 Calendar



Katydid



**Blister
Beetle**

All programs led by park staff and volunteers: (cb) Conrad Baker, (tb) Theo Berenson, (ob) Oliver Bickel, (cd) Claire Devlin, (lh) Lara Hargrave, (sh) Sarah Hodgins, (jh) Jules Hoepfing, (ml) Mike Landowski, (hm) Heather Markel, (mn) Matt Nusstein, (ao) Anne O'Reilly, (kr) Karen Russell, (js) Jen Snow, (kt) Kate Torrey

The Humphrey Nature Center (HNC) Open Daily 10:00 am - 5:00 pm

- 16 Fri • 11:00am **The Story of the Glen Iris Estate.** Meet at the museum. (1 hour, onsite) (js)
- 2:00pm **The Genesee Valley Canal: Clinging to the Canyon.** Meet at the museum. (½ hour +, onsite) (jh)
- 17 Sat • 10:00am **Sneaky Snakes and Down Right Lies.** Meet at **HNC**. (1 hour, onsite) (tb)
- 1:00pm **SUMMER SYMPOSIUM SERIES: Quaking Mats, Muck & Mire: the Magic and Mystery of Bogs.** Wayne Gall. Meet at the **HNC**. (1 hour, onsite)
- 18 Sun • 1:00pm **Tour of Upper and Middle Falls.** Meet at Upper Falls Picnic Area. (1 hour, 1 mile) (ml)
- 19 Mon • 2:00pm **Mr. Letchworth: Champion of the Less Fortunate.** Meet at the museum. (½ hour +, onsite) (ob)
- 8:00pm **CREPUSCULAR WALK: Blue Moon by the River.** Meet at Lower Falls restaurant. (2 hours, 1 mile) (mn)
- 20 Tue • 1:30pm **Marvin the Mastodon.** Meet at the museum. (½ hour +, onsite) (js)
- 2:00pm **Day-to-Day Life with the Seneca.** Meet at the museum. (½ hour +, onsite) (kr)
- 21 Wed • 2:00pm **The Civilian Conservation Corps: The Boys Who Built the Park.** Meet at the museum. (½ hour +, onsite) (jh)
- 22 Thu • 2:00pm **The Remarkable Life of Mary Jemison.** Meet at the museum. (½ hour +, onsite) (ob)
- 23 Fri • 10:00am **Stone Tool Craftsman Show.** Meet at Highbanks Recreation Area. (7-hour event)
- 11:00am **The Story of the Glen Iris Estate.** Meet at the museum. (1 hour, onsite) (js)
- 1:00pm **Caterpillar Hunt.** Meet at the **HNC**. (1 hour, ½ mile) (tb)
- 2:00pm **The Genesee Valley Canal: Clinging to the Canyon.** Meet at the museum. (½ hour +, onsite) (jh)
- 24 Sat • 10:00am **Stone Tool Craftsman Show.**

The following RELATIVE RATING SYSTEM is applied to the programs. Most are appropriate for families. All programs are ● I except as noted.

Terrain

- easy (shortest time, near level, on trail)
- more difficult (intermediate)
- ◆ most difficult (longest time, steeper banks, or off trail)

Presentation of subject matter (geared to audience)

- I introductory level
- II secondary level

Meet at Highbanks Recreation Area. (7-hour event)

- 10:00am **EXPLORE LETCHWORTH: Silver Lake Outlet.** Meet at campground registration building. (2 hours, 2 miles) (mn)
- 1:00pm **SUMMER SYMPOSIUM SERIES: Cartographic Creations Using iNaturalist.** Kieran Kelley. Meet at the **HNC**. (1 hour, onsite)
- 25 Sun • 10:00am **Stone Tool Craftsman Show.** Meet at Highbanks Recreation Area. (4-hour event)
- 1:00pm **Tour of Lower Falls.** Meet at Lower Falls Area, Octagon Building. (1 hour, 1 mile) (tb)
- 26 Mo • 2:00pm **Mr. Letchworth: Champion of the Less Fortunate.** Meet at the museum. (½ hour +, onsite) (ob)
- 27 Tue • 1:30pm **Marvin the Mastodon.** Meet at the museum. (½ hour +, onsite) (js)
- 2:00pm **Day-to-Day Life with the Seneca.** Meet at the museum. (½ hour +, onsite) (kr)
- 28 Wed • 2:00pm **The Civilian Conservation Corps: The Boys Who Built the Park.** Meet at the museum. (½ hour +, onsite) (jh)
- 29 Thu • 10:00am **Caterpillar Hunt.** Meet at the **HNC**. (1 hour, ½ mile) (ml)
- 2:00pm **The Remarkable Life of Mary Jemison.** Meet at the museum. (½ hour +, onsite) (ob)
- 30 Fri • 11:00am **The Story of the Glen Iris Estate.** Meet at the museum. (1 hour, onsite) (js)

AUGUST

Letchworth State Park EDUCATION PROGRAMS Summer 2024 Calendar



**Bald-faced
Hornet**



**Hammock
Spider**

All programs led by park staff and volunteers: (cb) Conrad Baker, (tb) Theo Berenson, (ob) Oliver Bickel, (cd) Claire Devlin, (lh) Lara Hargrave, (sh) Sarah Hodgins, (jh) Jules Hoepting, (ml) Mike Landowski, (hm) Heather Markel, (mn) Matt Nusstein, (ao) Anne O'Reilly, (kr) Karen Russell, (js) Jen Snow, (kt) Kate Torrey

The Humphrey Nature Center (HNC) Open Daily 10:00 am - 5:00 pm

- 30 Fri • 1:00pm **Nature Scavenger Hunt.** Meet at the (1 hour, ½ mile) (tb)
 • 2:00pm **The Genesee Valley Canal: Clinging to the Canyon.** Meet at the museum. (½ hour +, onsite) (jh)
- 31 Sat • 10:00am **Nature and Park information Table.** Displays and information at Mt. Morris Dam. (2 hours, onsite) (cb)
 • 1:00pm **SUMMER SYMPOSIUM SERIES: The Seneca Parliament House. Mike Landowski.** Meet at the (1 hour, onsite)

SEPTEMBER

- 1-30 • **NATURE TABLE – Monarchs.** (10:00am - 5:00pm)
- 1 Sun • 10:00am **Story of the Council Grounds.** Meet at council grounds parking area. (2 hours, onsite) (ml)
 • 1:00pm **Nature and Park information Table.** Displays and information at Upper Falls/Trestle parking area. (2 hours, onsite) (mn)
- 2 Mon • 10:00am **Geology Walk.** Meet at Lower Falls Area, Octagon Building. (1½ hours, 1 mile) (tb)
 • 12:30pm **How the Gorge was formed: Story of the Park.** Displays covering geology of the park at Archery Field overlook. (2 hours, onsite) (mn)
 • 2:00pm **Mr. Letchworth: Champion of the Less Fortunate.** Meet at the museum. (½ hour+, onsite) (ob)
 • 2:30pm **Glen Iris Estate Walk.** Meet at the museum. (2 hours, 1 mile) (ml)
- 3 Tue • 1:30pm **Marvin the Mastodon.** Meet at the museum. (½ hour +, onsite) (js)
 • 2:00pm **Day-to-Day Life with the Seneca.** Meet at the museum. (½ hour +, onsite) (kr)
- 4 Wed • 2:00pm **The Civilian Conservation Corps: The Boys Who Built the Park.** Meet at the museum. (½ hour +, onsite) (jh)
- 5 Thu • 1:00pm **HOME ECOLOGIST – Tagging Monarch Butterflies (Basic).** Meet at the

The following RELATIVE RATING SYSTEM is applied to the programs. Most are appropriate for families. All programs are ● I except as noted.

Terrain

- easy (shortest time, near level, on trail)
- more difficult (intermediate)
- ◆ most difficult (longest time, steeper banks, or off trail)

Presentation of subject matter (geared to audience)

- I introductory level
- II secondary level

(1 hour, onsite) (cb)

- 2:00pm **The Remarkable Life of Mary Jemison.** Meet at the museum. (½ hour +, onsite) (ob)

- 6 Fri • 11:00am **The Story of the Glen Iris Estate.** Meet at the museum. (1 hour, onsite) (js)

- 2:00pm **The Genesee Valley Canal: Clinging to the Canyon.** Meet at the museum. (½ hour +, onsite) (jh)

- 8 Sun • 11:00am **Caterpillar Hunt.** Meet at the (1 hour, ½ mile) (tb)

- 9 Mon • 10:30am **KNEE-HIGH NATURALIST: Butterflies!** Program designed for children ages 3 – 6. Registration required by calling (585) 493-3680. Meet at (1 hour, onsite) (ao)

- 2:00pm **Mr. Letchworth: Champion of the Less Fortunate.** Meet at the museum. (½ hour +, onsite) (ob)

- 10 Tue • 1:00pm **HOME ECOLOGIST – Tagging Monarch Butterflies (Intermediate).** Meet at the (1 hour, onsite) (cb)

- 1:30pm **Marvin the Mastodon.** Meet at the museum. (½ hour +, onsite) (js)

- 2:00pm **Day-to-Day Life with the Seneca.** Meet at the museum. (½ hour +, onsite) (kr)

- 11 Wed • 2:00pm **The Civilian Conservation Corps: The Boys Who Built the Park.** Meet at the museum. (½ hour +, onsite) (jh)

- 12 Thu • 2:00pm **The Remarkable Life of Mary Jemison.** Meet at the museum. (½ hour +, onsite) (ob)

SEPTEMBER

Letchworth State Park EDUCATION PROGRAMS Summer 2024 Calendar



Water Scorpion



Water Boatman

All programs led by park staff and volunteers: (cb) Conrad Baker, (tb) Theo Berenson, (ob) Oliver Bickel, (cd) Claire Devlin, (lh) Lara Hargrave, (sh) Sarah Hodgins, (jh) Jules Hoepting, (ml) Mike Landowski, (hm) Heather Markel, (mn) Matt Nusstein, (ao) Anne O'Reilly, (kr) Karen Russell, (js) Jen Snow, (kt) Kate Torrey

The Humphrey Nature Center (HNC) *Open Daily 10:00 am - 5:00 pm*

- 13 Fri • 11:00am **The Story of the Glen Iris Estate.** Meet at the museum. (1 hour, onsite) (js)
- 2:00pm **The Genesee Valley Canal: Clinging to the Canyon.** Meet at the museum. (½ hour +, onsite) (jh)
- 7:00pm **Dusk at a Beaver Pond.** Meet at Parade Grounds parking area. (2 hours, onsite) (mn)
- 14 Sat • 10:00am **ARBORETUM WALK: Along Main Park Road.** Meet at **HNC**. (2 hours, 1½ miles) (ml)
- 16 Mon • 2:00pm **Mr. Letchworth: Champion of the Less Fortunate.** Meet at the museum. (½ hour+, onsite) (ob)
- 17 Tue • 1:30pm **Marvin the Mastodon.** Meet at the museum. (½ hour +, onsite) (js)
- 2:00pm **Day-to-Day Life with the Seneca.** Meet at the museum. (½ hour +, onsite) (kr)
- 6:00pm **CREPUSCULAR WALK: Full Moon over the Canyon.** Meet at Archery Field overlook. (2 hours, 1 mile or more) (mn)
- 18 Wed • 2:00pm **The Civilian Conservation Corps: The Boys Who Built the Park.** Meet at the museum. (½ hour+, onsite) (jh)
- 19 Thu • 10:00am **I BIRD NY.** Meet at visitor center. (2 hours, 1 mile or more) (mn)
- 2:00pm **The Remarkable Life of Mary Jemison.** Meet at the museum. (½ hour +, onsite) (ob)
- 20 Fri • 11:00am **The Story of the Glen Iris Estate.** Meet at the museum. (1 hour, onsite) (js)
- 2:00pm **The Genesee Valley Canal: Clinging to the Canyon.** Meet at the museum. (½ hour +, onsite) (jh)
- 21 Sat • 10:00am **Tanghe Foray.** Special program of the Rochester Mycological Society. Meet at Parade Grounds parking area
- 3:00pm **Letchworth on Tap.** Meet at Buried Barrel Hard Cider, 6517 Denton Corners Road, Castile, NY. (2 hours, onsite) (cb)
- 23 Mon • 10:30am **KNEE-HIGH NATURALIST: Nature's Music.** Program designed for children ages 3 – 6. Registration required by

The following RELATIVE RATING SYSTEM is applied to the programs. Most are appropriate for families. All programs are ● I except as noted.

Terrain

- easy (shortest time, near level, on trail)
- more difficult (intermediate)
- ◆ most difficult (longest time, steeper banks, or off trail)

Presentation of subject matter (geared to audience)

- I introductory level
- II secondary level

- calling (585) 493-3680. Meet at **HNC** (1 hour, onsite) (ao)
- 2:00pm **Mr. Letchworth: Champion of the Less Fortunate.** Meet at the museum. (½ hour+, onsite) (ob)
- 24 Tue • 1:30pm **Marvin the Mastodon.** Meet at the museum. (½ hour +, onsite) (js)
- 2:00pm **Day-to-Day Life with the Seneca.** Meet at the museum. (½ hour +, onsite) (kr)
- 25 Wed • 2:00pm **The Civilian Conservation Corps: The Boys Who Built the Park.** Meet at the museum. (½ hour +, onsite) (jh)
- 26 Thu • 2:00pm **The Remarkable Life of Mary Jemison.** Meet at the museum. (½ hour +, onsite) (ob)
- 27 Fri • 11:00am **The Story of the Glen Iris Estate.** Meet at the museum. (1 hour, onsite) (js)
- 1:00pm **HOME ECOLOGIST – Tagging Monarch Butterflies (Advanced).** Meet at the **HNC**. (1 hour, onsite) (cb)
- 2:00pm **The Genesee Valley Canal: Clinging to the Canyon.** Meet at the museum. (½ hour +, onsite) (jh)
- 28 Sat • 10:00am **EXPLORE LETCHWORTH: Shelf Island.** Meet at Parade Grounds parking area. (3 hours, 2 miles) (mn)
- 30 Mon • 2:00pm **Mr. Letchworth: Champion of the Less Fortunate.** Meet at the museum. (½ hour+, onsite) (ob)